

2024 Annual Report



Our growing impact **in the** **Eastern Bay** **of Plenty**



Sustainable Development Goals

In 2015 the United Nations adopted a 15 year plan to make significant changes across the globe- a shared blueprint for peace and prosperity, for people and planet and partnerships to make these changes. In October 2023, the Eastern Bay Community Foundation Board of Trustees also adopted these goals to align with how we work with our communities in the Eastern Bay.

Sometimes when world events seem ‘so extreme’ ...we feel powerless to make changes. However, by adopting the UN Sustainable Development Goals we are aligning to a set of principles as a guiding light to how we work with donors, how we make decisions on grant funding and how we provide leadership in this space in our region.

Ending poverty goes hand in hand with strategies that improve health and education, reduce inequality and make space for economic growth- all the while tackling the REALLY BIG ISSUES of Climate Change - working to preserving our oceans and our forests.

Decades of work and global research has gone into these principles- and now at a local level we can also use these as our guide, right here in the place we call home. You can help us to achieve these goals by considering the planet you want to leave behind for our children’s children.



How far we have come

2012

Meeting held with EBOP Mayors and Business leaders to consider expansion Eastern Bay wide.

First Endowment Fund established

2014

Work undertaken across the Bay to establish new

Trustees Miles Mander, Douglas Bull, Robyn Towersey, Jacqui Hughes, Barney Gray and Grant Lowe joined Peter Anstis and Ray Sharp
Executive Officer Sarah-Jane Hasman

2018

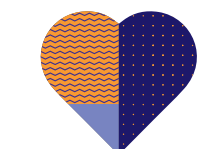
Independent Vital Signs Research released to community Six treaty settlements in the Eastern Bay in 2018. Robyn Woolsey joins the Board.

6 new funds established

2020

Invitation to attend funders hui at Cape Runaway with Todd Foundation, JR McKenzie Trust, Tindall Foundation, Te Muka Rau Foundation. Covid Pandemic grips the world, Borders close. Trustees Helen Stewart & Barney Gray step down as Trustees. Hosted first annual dinner at Roquette with Greg Brownless (ex Mayor of Tauranga) as speaker. Viv Barr joins the Board. Hosted a fundraising evening with Chloe Wright Wright Family Foundation as speaker. appointment of Treasurer Christine Mansell.

8 new funds established.



2005

Ōpōtiki Community Trust steering group established
Trustees Peter Anstis, Bryan Gould, Barbara Collis, Ian Craig, Ray Sharp

2005-2008

Actively engaging with Ōpōtiki Community Groups, Rotary etc
Ōpōtiki A & P Show Promotion

2009

Ōpōtiki Development Trust and Ōpōtiki Community Foundation Deeds signed. Seed funding provided through ODC for establishment to support social and economic well being for the Ōpōtiki community. Gae (Newell) Finlay becomes secretary. 7 record keepers for Foundation.

2013

January 25th
Request to ODC to amend Trust Deed to broaden the reach of the Ōpōtiki Community Foundation

2017

Rosemary Sloman employed as Executive Officer 12-15 hours per week. Edgcumbe stopbank breached, and the town experienced major flooding.
2 new funds established

2015

April 21st
Eastern Bay Community Foundation Launched @ Detour Bar & Lounge with Sir Stephen Tindall as guest speaker : Representatives of business, professional advisors, Energy Trusts, Chamber of Commerce, BayTrust and Local elected representatives.
2 new funds established

2016

Kay Boreham begins contract work as Executive Officer up to 12 hours a week, promotion stand at Business & Leisure Show, Invited speaker to Community Groups. KEA CEO Helen Stewart joins the Board.

2019

Launched the Ōpōtiki Kiwifruit Growers Community Endowment Fund. Established first strategic plan for Foundation. Whakaari-White Island Eruption: Disaster Fund Commenced. Trustee Robyn Towersey dies.
3 new funds established. Updated website launched.

2021

Covid lockdowns & restrictions continue. Number of Trustees increased to twelve, representing the three Districts. Launched Ambassador Programme -Friends of the Foundation. Annual dinner held at Ōhope Chartered Club with Retired Coroner Wallace Bain as speaker. Moved to permanent commercial premises in George Street Whakatāne. Whakaari Disaster funds granted to eight emergency responders. Registration for GST. Establishment trustees Miles Mander and Peter Anstis step down as Trustees. Peter Anstis appointed as Patron. New trustees appointed: Annette Papuni-McLellan, Paul Nicolson, Bradley Shaw, Jimmy Heal and Leisha Thompson. Operational support ; Lyndell Jones employed 6 hours per week.
6 new funds established. Erected signage on all state highways in the district. Impact 100 Fund launched. Milestone of first \$M in funds under management.

2022

Established First Memorial Fund, Chair Douglas Bull steps down, Deputy Chair Scottie McLeod takes on leadership. Establishment trustee Jacqui Hughes steps down. 2 new funds established. High profile car raffle to raise awareness and funds for the foundation. Online donation platform installed.

2023

Completed first Trust Transfer, held first Charity Golf Tournament benefiting the EBOP RDA. Original Trustee Ray Sharp steps down after 15 years from the Board. Five donors including our first donor pass away. Arron Perriam and Kevin Egglinton - keynote speakers at the Annual Dinner. New Strategic Plan adopted.
5 new funds established.

2024

Kawerau Trustee Trina Hayes appointed, First scholarships awarded, EO Rosemary Sloman retires.
10 new funds established.

Chairperson's Report

2023-2024

2023-24 has been a year of meaningful connections with our community. We have been busy making space for important conversations and taking the time to truly listen to the organisations and people on the front lines through our round table feedback conversations. We have also been building relationships with the local philanthropic and funding sectors who also support our region, Horizon Energy Trust, BayTrust, Local and Regional Councils.

You may ask why? This relationship building is to ensure we can find relevant ways to work with the frontline charities and organisations who do amazing work to keep the cogs turning and doors open in our region and for our Foundation to grow to become less transactional and more transformational in our approach to building community.

With this approach we understand more of the why – that for our charities and not-for-profits is so important and so relevant. These raw and real conversations deepen our knowledge of where the pain points are- so that the Foundation can fund in a way that is real, timely and transformational. By working in this way, we are attempting to remove barriers and to assist our charities to focus and concentrate on the work they have in hand. For us as a trusted Community Foundation, it is not about signing cheques and ticking boxes, its about playing our part locally to make a real difference.

It has also been a year of growing funds and increasing returns on our investments resulting in a good number of satisfied recipients, with \$92,000 having been given out this financial year. The Trustees are ever grateful to the donors – individuals, families and businesses whose generosity reaches our community via this Foundation.

The support of our community through the members of the Ōpōtiki Kiwifruit Growers Community Fund and the Eastern Bay Women's Impact Fund is always recognised for the tremendous good that these pass-through funds achieve in the district. The publicity that these projects attract for the Foundation is invaluable in highlighting the benefits of collective giving.

Gaining support and raising funds to keep the cogs turning within an administrative capacity has been a challenge. The Trustees are grateful to those who continually support the Foundations operations to enable the work we do, to continue. The Board has recently increased the staffing requirements to assist in this area of the Foundations work.

In April the Foundation held their inaugural golf tournament at the Whakatāne Golf Links.

It was a success on many fronts, as a way of focusing on the goals of the Foundation, having fun and raising funds. Thanks to Trustees Bradley Shaw and Jimmy Heal for their work on this project.

The annual dinner held in September at the Ōhope Golf Club, with guest speaker, Luke Kemeys was a successful evening, also enabling Zac Herrick and Zoe Botha to elaborate on the leadership experiences they each were able to take part in due to funding via generous donors to the Foundation, and on this occasion the Board also publicly farewelled founding Trustee Ray Sharp.

Matariki was celebrated with a hangi and a guided star viewing, courtesy of Matt Lowe and his powerful telescope at Viv Barr's home in Awakeri. The Board thanks Trustees Viv and Robyn for organising this. It is important sometimes to just stop and appreciate all the good in our lives and to remember those who have gone before.

May 26th Eastern Bay Fonterra shareholders and farmers held their annual golf day with the proceeds of the day generously gifted to the Rod McPherson Memorial Rural Scholarship Fund ; this was a day Rod usually participated in.

In February this year, our Executive Officer Rosemary announced to the board of trustees her intention to retire. A role Rosemary has held for 7 years and to which she has given outstanding service, often putting the Foundation before herself. Rosemary has been the face of the Foundation and has set up the building blocks for the future. The Board will have to move on without her, but no doubt she will not be too far away if her advice is required.

In March the Board made the decision to review the structure of the paid positions within the Foundation and with advice, have moved to a 'management structure'. The appointment of Angela Jackson as the Foundation Manager began in April, following her twelve months in an administrative support role.

In May of 2024, Michael Howe, originally from Opotiki, recently returned from 27 years in Scotland has been appointed to the role of Engagement Manager, working one on one with potential donors and supporters. The newly appointed managers will each be reporting their progress to our Community in the 2024-2025 Annual Report.

It has been a fully committed year for all Trustees and I would like to thank each Trustee for their dedication to the tasks in hand, and record my thanks to the deputy Chairperson. Robyn Woolsey.

During the year the Board accepted the resignation of Trustee Leisha Thompson, who briefly assisted in the upgrade of the Foundation's computer systems and provided some input into HR matters. Ray Sharp's fifteen years of service to the Eastern Bay Community Foundation were acknowledged at the 2023 Annual Dinner. Ray and Lis are generous supporters of their community, in all aspects- gifting their time, talent and treasure. Their generosity is ongoing, and our Foundation has a deep appreciation for their ongoing contribution.

The Board appointed two new Trustees during the 2023 year – Christine Mansell who has diligently carried out the Treasurers portfolio for three years, and Trina Hayes, a Kawerau resident with extensive family ties across the eastern part of the region. Trina works remotely in specialized audit accounting, is a partner of Ake Accounting and audits for Cookson Forbes.

Community Foundations Aotearoa New Zealand provide constant support via Executive Director Aaron Perriam, Marketing Advisor Ellen Miles and Membership Services Director Eleanor Cater, who is currently assisting the Trustees in their quest to achieve a quality standard through an approved attestation process. This robust process will strengthen the governance of the Eastern Bay Community Foundation and will enable seamless expansion as time and change dictates in the future. This project is being led by Trustees Viv and Christine with support from Angela. This achievement will make the Eastern Bay Community Foundation the third in the country to achieve this status, and allows donors and supporters to have confidence in the policies and procedures embraced and practiced by the Foundation.

The Trust Deeds of the Eastern Bay of Plenty Community Foundation have recently been updated by Holland Beckett Law, to include adherence to changes in legislation. Advice has also been provided for new employment agreements for staff. Thanks to Luke Stewart and his team.

Now is a good time to acknowledge the contribution made by the team at Rural Accountants Whakatāne, and our auditor, Cookson Forbes Chartered Accountants Ōpōtiki. Their generosity in contributing to the work of our Foundation in this way is truly appreciated.

The calibre of the Foundation Trustees makes my job as Chair - straight forward. The Trustees are outstanding in the generosity they display and in the gifting of their time to make a difference in our community.

I thank them all.



Scottie McLeod
Chairman



Executive Officer's Report

2023-2024

He waka – eke noa – we are all in this canoe together.

How do I briefly give an overview and justice to a very full year of activities growing and promoting our community foundation here in the Eastern Bay? By the time you read this, the knowledge of my retirement from the role of Executive Officer will have spread far and wide, so this report will be my last and therefore also a reflection on my role of the past seven years. However within this report, you, the reader will become acquainted with the range and scope of our work over the year April 1- 2023- March 31 2024.

Recently, I got to listen to Dr Jane Goodall, (who has been the champion of chimpanzees and the natural world since 1960) on her Reasons for Hope Global Tour- she said "its important to be talking about hope, because if we lose hope, we become apathetic, we do nothing, and if we don't get together and do something about the state of our world- we are doomed. As the UN messenger of peace, Dr Jane believes in hope and her last words are still ringing in my ears "the most important thing is for people to realise that their lives do matter, and they can make a difference." Absolutely the same message held fast by our Community Foundation, letting people know the power they hold to make small but significant change, and how their generosity truly has impact within our own neighbourhoods, not just for now, but in a very sustainable way well into the future.

In October last year, the Eastern Bay Community Foundation Board of Trustees adopted the United Nations Sustainable Development Goals - a global, realistic set of guidelines and values upon which to base all decision making within the Foundation to benefit our communities. The reader can understand more about what the Sustainable Development Goals are, within this Annual Report. We all, as a community want to see the elimination of poverty, zero hunger, good health and well-being, quality education, gender equality and many more actions achievedwithin those seventeen goals are some significant challenges locally and globally. The clock is ticking and 2030 - the time framed promise made to end poverty, protect the planet and leave no one behind - is not too far away, so our role is to make sure these are not just words on a page, but actions that truly make a difference right here in the Eastern Bay.

In February this year we held a series of round table gatherings with charitable groups who received funds in the past year. Those present were able to share their challenges and successes, highlighting how recent funding from the Eastern Bay Community Foundation has helped sustain them. Rising demand and the growing complexity of community needs, exacerbated by a fall in funding availability were significant concerns, with many not-for-profit

organisation's struggling to balance increases in demand for their services against limited financial resources. This is always a balancing act, a conundrum facing funders- like our Foundation, over how to make a real difference and how the impact of saying no to an essential service flows-on to affect our community. And right now – its tough out there.

That is why our real champions are always our donors- those who have realised that they can make a difference. At every turn, we must highlight their generosity and consider what they are foregoing and have sacrificed to add their weight to a cause within our community. Making a conscious choice to assist others- be that in education, social circumstances, improved health status, or championing our environment- the driving factor is: these are people with heart who truly care. These are the folk who have a real desire to set the region up for success and make a difference.

We achieved many 'firsts' in 2023- first scholarships awarded, first continuous part time support staffing, first distributions from new endowment funds, first trust re-settlement. We have shared our ideas, shown leadership and collaborated with local charities to assist them to grow in ways that were new to them and connected them to a world of potential sustainability.

I feel very privileged to have walked alongside and told the stories of 'our people' over the past seven years, because these people who care, are my people too. Motivated to make a difference, in a way that fits their own personal ethos. It has been beneficial to be involved in setting up the Eastern Bay Community Foundation for future success.

My role going forward is one of ambassador and volunteer, always upholding the Foundation and its principles, which have formed and informed an important part of my life. My kete has indeed been filled by the many warm and positive relationships formed.

I wish every success that hard work deserves, for our communities of the Eastern Bay via our Community Foundation.

Ka pū te ruha, ka hao te rangitahi – as an old net is cast aside, another is remade.



Rosemary Sloman JP
Executive Officer

Tragedy turns to triumph to keep the legacy alive



Left to right - Kevin Hennessey, Rosemary Sloman, Steve Nelson, Suzzane Nelson - in the background Opotiki Tyres - The late Gordon Nelsons business. Kevin, Steve and Suzzane were all trustees of the Gordon Nelson Rescue Equipment Trust

In response to a tragic accident that took the lives of larger-than-life Opotiki businessman Gordon Nelson and his friend Frederick Ruff, the people of the Opotiki District poured donations into a fund, specifically to be used for communication and rescue equipment in this remote region. The Eastern Bay Community Foundation made it a simple and straight forward process to allow that legacy to continue supporting the Opotiki District without the compliance hassles.

In April 2014, on the remote Takuputahi Road, Toatoa, in the Raukumara Ranges an accident claimed the lives of Gordon Nelson and his friend Frederick Ruff. Gordon was a mover and shaker in Opotiki, a man who everyone knew, and a man with a huge heart, who would help anyone and everyone. In fact, he was in his tow-truck when the accident happened. Extremely limited communication meant getting immediate help was virtually impossible. As a shock response to the deaths of the two men, the community responded with donations and a trust was set up to support better communication and up to date rescue equipment to voluntary organisations at the coal face of road trauma and rescue missions, on land and at sea in the Opotiki District.

Over the years since the trust has been in place, an annual grant has been made to voluntary organisations like Opotiki Coastguard, Land Search and Rescue, Waiotaha Surf Life Saving and other groups involved in essential life-saving work.

The Nelson family and trustees of the trust made the decision to transfer the funds remaining in the Gordon Nelson Rescue Equipment Trust to the Eastern Bay Community Foundation, to grow these funds further and to allow others to continue to contribute to this fund, which will benefit organisations involved in saving lives in the Opotiki District.

To continue supporting rescue organisations in the Opotiki District go to:

<https://www.easternbaycommunityfoundation.nz/gordon-nelson-rescue-equipment-fund>

The first scholarships ever awarded by the Eastern Bay Community Foundation



From left: Zoe Botha and Jean Smithson

Zoe Botha was awarded the residual funds gifted by the Inner Wheel of Ōpōtiki, when they went into recess.

Zoe used these funds to attend the Young Holstein Breeders Conference in Belgium in 2023.



The Rod McPherson Memorial Rural Scholarship - awarded to Emma Rose Black of Ōpōtiki - studying at Massey University

From left: Colin Wilson, Jacqui McPherson, Emma Rose Black and Christine Mansell



From left: Moana Wilson and family

The Jean Smithson Nursing Scholarship - awarded to Moana Wilson, a third year nursing student from Ōpōtiki



From left: Gerald Lomas and David Hartley

Making a difference well into the future

When Gerald Lomas and David Hartley sat down to review their sixty-four years together, they knew they wanted to leave a gift that would be both enduring and make a difference to the charities they have supported over their years in New Zealand.

Gerry grew up near the Bristol docks, and David in Leeds, during the depression and the war years that impacted their collective outlook on life. They met when they were both conscripted to the Armed Forces in post-war Britain and remained a committed couple until Gerry passed away in October 2023.

Gerry was a teacher, very interested in theatre, speech, and drama. He was a scholar, until his last days, learning languages and thirsty for knowledge on all fronts. Wherever he went he enrolled for further education to better his own knowledge and to increase his capacity to teach others. He achieved his Doctorate towards the end of his teaching career from the University of Auckland. He travelled widely as an examiner for Royal Schools in speech and drama and met and made many friends all over the world. Gerry was also besotted with armory, researching, and designing coats of arms, and learning the back story of the ancestors in order to craft the perfect symbols to represent a modern-day family. His calligraphy

skills were much admired, and each Christmas or birthday special friends received handmade, and hand drawn calligraphic cards. He enjoyed local theatrical productions with Theatre Whakatāne, visiting artists and performances of the Edgecumbe Choir.

David spent his working days juggling pots and pans as a chef. He and Gerry ran their own café for a time in Rippon, Yorkshire, before emigrating to Australia, where David took up several different roles cooking for the rich and famous. Upon arriving in Auckland David secured a position with the well renown French Café in Auckland. Many restaurant reviews support his attention to detail and his culinary flair and finesse. His lunches were legendary and apparently he cooked whitebait like no other. David also took up corporate catering, until he decided once and for all to hang up his apron and settle into retirement.

The Marriage Equality Act which passed into law in 2013, finally allowed Gerry and David to legally commit to the partnership they began in 1959. It was a milestone in a relationship that was tested at times by the confines of society. In their retirement Gerry and David chose to leave the city behind them and retire to Whakatāne, where they have lived and enjoyed a quieter pace of life over the past ten years.

Their generous legacy will benefit ten charities who all provide essential support within our communities of the Eastern Bay.





Building a resource to celebrate their first 50 years- to benefit the next 50 years.

As the Opotiki Arts Society heads towards their 50th year, the members have made the decision to launch an endowment fund, to ensure a thriving arts community within the Opotiki District can be sustained.

This fund will provide a steady income stream to foster new skills and allow for the exploration of different art disciplines for members and associates. Already a drawcard, the five exhibitions held by Opotiki Arts throughout each year bring visitors to Opotiki, such is the quality and range of art on offer. The reputation of artists in the district attracts a good following from as far afield as Wellington and North Auckland.

Launching officially in 1977, the Opotiki Arts Society has become, over the past 47 years, a place and space for connection and learning for established artists and those dipping their brush in the pot, or hands in the clay for the very first time. The goal of the Society is to have a \$50,000 fund by 2027- to mark their golden anniversary. This fund will provide a steady income to

meet the costs of tutors who can assist members and associates to broaden their capability and explore new artistic horizons.

Kilns have just been installed on site and it is planned to host clay and jewellery workshops in the near future, to expand the scope of artistic expression. Currently Opotiki Arts fosters weaving, papier mâché, oil and acrylic painting, pen and ink work, woodturning and wood crafting, carving, clay work, pottery, porcelain, ceramics, papermaking, wool and fibre arts, mixed media, jewellery, featherwork and glass art. In turn ...developing these new skills will attract new participants and more out of town visitors to the annual exhibitions plus their annual Art in the Garden weekend.

Opotiki Arts encourages the support of those who appreciate the extra dimension that artworks, along with the engagement and fostering of artists brings to the Opotiki District.

To actively support this fund, go to:
<https://www.easternbaycommunityfoundation.nz/opotiki-arts-society-endowment-fund>



Marilyn & Murray Thompson

Committed to Family – Connected to Community

Marilyn and Murray Thompson contributed in so many ways to the communities they were a part of, and generously decided to provide a legacy to support people and organisations who work hard to make a difference to the lives of others.

Growing up in Canterbury, Murray had always had a yearning to be a dairy farmer, so at the young age of seventeen he headed north to the heart of the King Country to learn the ropes, under the mentorship of his uncle, who was farming in Otorohanga.

Marilyn- almost 'the girl next door', was a quiet achiever, who left school to work in the bustling maternity home in Otorohanga, supporting new mothers to bond with their babies during their ten-day confinement. It was a busy time; the post war baby boom was in full swing.

Deeply smitten young love, which started out at their church youth group, quickly became a lifetime commitment, when Murray and Marilyn were married in 1960, in the church they were members of, and quite soon Marilyn's hands were busy raising their own children: Michelle, Delwyn, Raewyn and Craig, as well as supporting Murray with the twice daily milkings and tasks on the farm.

Murray was a passionate cricketer (and later an avid follower of national and international cricket), who was very involved in the local school parent teacher association, church activities and responsibilities, Federated Farmers and service to his community through Rotary. He was a very outgoing man, a bit of an extrovert, a practical joker and prankster who loved a bit of mischief.

Marilyn was a happy and positive person, loyal and faithful, caring and sincere. Her biscuit tins were always full, and a welcome cuppa and listening ear awaited any who might need her. The Sunday roast was a weekly ritual, shared after Sunday school and church. Marilyn was a woman of her time- an excellent seamstress and knitter, clothing her growing family. Later when time wasn't so pressured, she developed a passion for needlework, embroidery, hardanger, and intricate glass bead work.



From left: Murray and Marilyn Thompson

Together Marilyn and Murray were a team, shoulder to shoulder in the cowshed, working hard to provide for and instil good values and morals into their growing family, side by side in every venture they undertook. Their home was often a place to host Rotary exchange students, and two of their daughters also benefitted from this experience overseas. Summer holidays off the farm in Otorohanga, were spent in a caravan and tent at Ōhope Beach.

One summer in the mid nineteen- eighties, Murray and Marilyn looked over a property in Kutarere that had just come on to the market, and decided it was a good opportunity to try their hand at something new, in a place they had come to love. A combination of dry stock farming and a newly established kiwifruit orchard, which would be aptly named Double M.

They embraced their new life in the Ōpōtiki District, learning all they could about being orchardists and supporting the St Johns Union Church. Murray remained actively involved in Rotary and Marilyn with Inner Wheel in Ōpōtiki and later they were both members of Probus in Ōhope. Murray also served as an elected member on the Ōpōtiki District Council for four terms from 1989 to 2001. Over the fifty-nine years of their marriage, they enjoyed many adventures overseas, and around New Zealand, spending time with many friends made through Rotary. They lived and truly embodied the Rotary motto- Service above Self. Murray and Marilyn's children and grandchildren are excited that this endowment will continue the work they were involved in, during their lifetime.



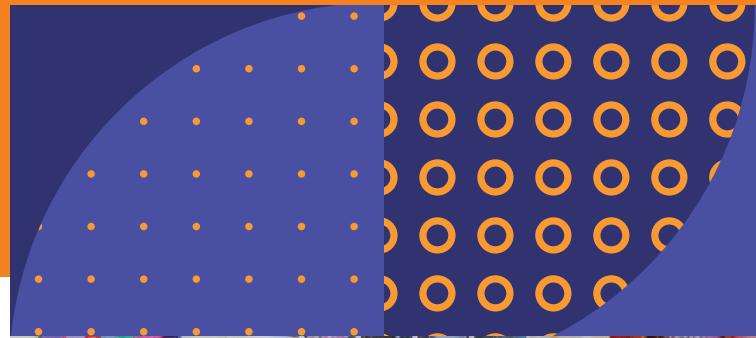
Seniors in our communities not forgotten

Friends of Thornton Park

The 'Friends of Thornton Park' are a group of volunteers looking to initially raise sufficient funds to purchase an accessible multi-purpose van, with wheelchair capacity, to enable residents to attend appointments, engage with community events and enjoy experiences outside Thornton Park. This fund will also put aside funds to ensure the residents are able to 'live their best life' once the first goal has been accomplished.

Thornton Park has been at the heart of providing residential aged care in Ōpōtiki for many years. Connections of current residents and caring locals have come together to form the Friends of Thornton Park.

The generosity of local people will help to greatly enhance the life experiences of the residents of Thornton Park and allow them to have a continued connection to the community they call home.



Residents of Thornton Park



To donate go to :
<https://www.easternbaycommunityfoundation.nz/friends-thornton-park-fund>

Enhancing daily life for aged care residents

Mountain View Residential Care



Enhancing daily life for aged care residents: A thoughtful legacy set up to benefit the residents of the Mountain View Care facility in Kawerau, has been made a reality by the daughter of a recent resident of Mountain View. Adrienne Lukes was cared for in her twilight years in Kawerau and has left a gift that will provide support for counselling for residents and their families facing challenging circumstances and the end of life, as well as additional occupational therapy - including the use of therapy animals and whatever is needed to enhance the quality of life for residents - to assist them to 'live their best lives'.

The Mountain View Endowment Fund will accept donations from others who wish to support this facility in Kawerau, serving well the needs and care of aged residents of the region.

To donate go to :
<https://www.easternbaycommunityfoundation.nz/mountain-view-endowment-fund>

Our progress



44 Funds giving back to the community forever



2 Scholarships



\$92,000 gifted to 21 Charities or Individuals received grants in 2023-24 year



\$71,226 Support in kind



Impact

in mental health, music, environment, youth education and opportunities, social support, preserving heritage, honouring and growing children, supporting development in Arts, disability support.



14 Funds 'tagged' to benefit a specific group or charity



3 part time staff - 1944 hours worked



9 Trustees



1400 Trustee and Ambassador Volunteer time (hours)



Golf Tournament, Annual Dinner
Professional Advisors - with International Legacy Specialist
Dr Claire Routley, Estate Legal Executives - Education



Governance and Strategic Planning

OUR FOCUS

TEAM

- 1 Team increased to 2.0 FTE by 2025
- 2 Team resourced to succeed
- 3 Team development activities



GROW

- 7 Grow through donor engagement
- 8 Grow 6 new funds minimum per year
- 9 Grow to \$3M invested funds by 2025

STORY

- 4 Story known by whole team & shared
- 5 Strategy for marketing development
- 6 Share our 'smarter way of giving' story



SUSTAIN

- 10 Secure multiple funding streams
- 11 Sustain EBCF operations
- 12 Size of endowments \$20M in 20 years

Our team

Trustees



Peter Anstis

Patron, Orchardist, Philanthropist - Ōpōtiki



Scottie McLeod

Chair, Farmer, Rotarian - Awakeri



Robyn Woolsey

Deputy Chair/ Grants & Distributions – Orchardist, Adventurer, - Ōpōtiki / Ōhope



Christine Mansell

Treasurer, Philanthropist, previous Pharmacist - Ōhiwa



Jimmy Heal

Grants and Distributions, People and Capability – Awakeri



Grant Lowe

Finance and Investments – Ōpōtiki



Bradley Shaw

Marketing, People and Capability - Taneatua



Trina Hayes

Finance and Investments - Kawerau



Paul Nicolson

Finance and Investments - Ōhope



Vivienne Barr

Policy and Attestation - Awakeri

Staff



Gae Finlay

Minutes & Archives – Ōhope



Rosemary Sloman

Executive Officer - Whakatāne



Angela Jackson

Manager - Whakatāne

Our Ambassadors

are a very important cog in the wheel of our Community Foundation

am·bas·sa·dor,

n. Official envoy, diplomatic agent, authorised representative, messenger.

What does it mean to be an ambassador?

An ambassador is a person who helps to promote the Eastern Bay Community Foundation during their normal daily activities. Being an ambassador means sharing information, and spreading the word about community philanthropy. It's a role that any Community Foundation volunteer can sign up for— Trustees, committee members, donors and people who care about our community. Their conversations greatly expand the foundation's reach, often enabling questions to be answered and enquiries to be referred to staff. Our ambassadors fill a vital role and we are very grateful for their time and energy.

Being an ambassador is a great way to be the connective tissue in our communities of the Eastern Bay.

Special thanks to our 2023-2024 Ambassadors:

Jean Smithson
Dot Wilson
Shannon Harnett & Shane Clark
Chris Anstis
Wayne Stuart
Lyn Reisterer & Kate Adams
Doug Brown
Janie Storey JP
Wilson James JP
David Poole
Lesley Immink
Wendy Tozer JP
Andrew Iles
Judy Turner
Ngairé Lewis
Ses Webster
Doug Bull
Stephanie Johnson-Bull
Clare Barkla
Miles Mander
Ray & Lis Sharp
Donna & Gary Shaw



Anstis Orchards



ONE DOUBLE X
90.5FM 92.9FM 1242AM



Robyn Watchorn, Laurie & Stephanie Mayne, Neil Craig, Robbie & Karen Ellison, Jimmy Heal, Rosemary Sloman, Peter & Marnie Anstis, Te Rahu Family Trust, Sharp Family Trust, Douglas Bull and McGlashen Family Trust. Generous Trustees of The Eastern Bay of Plenty Community Foundation

Let's <<<<
WORK
↓ ↓ ↓
TOGETHER
.....

“Naau to rourou, naaku te
rourou ka ora ai te manuhi
- with your basket and my
basket, the people will thrive”